

LADY M
Beretti
ITALIAN EXCELLENCE SINCE 1873

Beretti
ITALIAN EXCELLENCE SINCE 1873



CRYSTAL 140',
CLASS D

DISPLACEMENT HULL
MEGAYACHT.

WELCOME
FAMILY
MEMBERS,
WELCOME
FRIENDS
AND
GUESTS.





FILL EVERY
SPACE WITH
LIFE AND
LAUGHTER,
AND I'LL
GREET YOU
WITH OPEN
ARMS.

FILL EVERY
DECK WITH
FUN AND
FESTIVITIES,
AND I'LL
GREET YOU
WITH OPEN
ARMS.







LADY M

BECAUSE HERE
EVERYONE
CAN FEEL AT
HOME, IN THEIR
OWN SPACE,
WITH THEIR
OWN PRIVACY.



GENEROUS SPACES
FOR ENJOYING LIFE ON BOARD,
IN COMPANY OR IN PRIVATE.





BECAUSE
HOSPITALITY
IS ABOUT BOTH
PLEASURE AND
DISCRETION.



HOSPITALITY
IS ABOUT
PRECIOUS
MARBLE
AND OAK,
GLASS AND
ROSEWOOD.



MyghaL



THE BATHROOMS AND KITCHENS
ARE EMBELLISHED WITH PRECIOUS
MARBLE, WHILE THE FURNITURE
IN THE SALONS AND CABINS IS
MADE OF FINE WOODS.





HOSPITALITY
IS AN
INDEPENDENT
LIVING AREA
ON EVERY
DECK.

FOR CELEBRATING WITH FRIENDS OR SURROUNDING YOURSELF
WITH THE WARMTH OF THE FAMILY. PRACTICAL, VERSATILE LOUNGE
AREAS SUITED TO EVERY SITUATION.



HOSPITALITY
IS KING SIZE
BEDS AND
UNRIVALLED
RELAXATION.



HOSPITALITY
IS A JACUZZI
THAT'S
ALWAYS
READY TO
WELCOME
YOU.

HOSPITALITY
IS A FULLY
EQUIPPED
BAR ON
EVERY DECK.



ELEGANT, EXCLUSIVE, COMPLETE
COCKTAIL BARS. FOR CELEBRATING
WHENEVER YOU LIKE,
WITH WHOEVER YOU LIKE.

HOSPITALITY
IS A YACHT
THAT
RESPONDS
MAGICALLY
TO EVERY
COMMAND.



A METICULOUSLY DESIGNED SYSTEM OF ONBOARD DOMOTICS MEANS THE WELL-ORGANISED WHEELHOUSE IS EQUIPPED WITH AN INTEGRATED INSTRUMENT PANEL WITH TOUCH-SCREEN MONITOR. MEANWHILE THE AUDIO, VIDEO AND LIGHTING SYSTEMS ARE ALL EASILY CONTROLLED WITH AN IPAD.



HOSPITALITY
IS ON BOARD.
COME AND
EXPERIENCE IT.



MAIN DECK





TOGETHERNESS



MAIN DECK DINING AREA



MAIN DECK OWNER'S CABIN





MAIN DECK OWNER'S BATHROOM





UPPER DECK SKY LOUNGE

RAPTURE

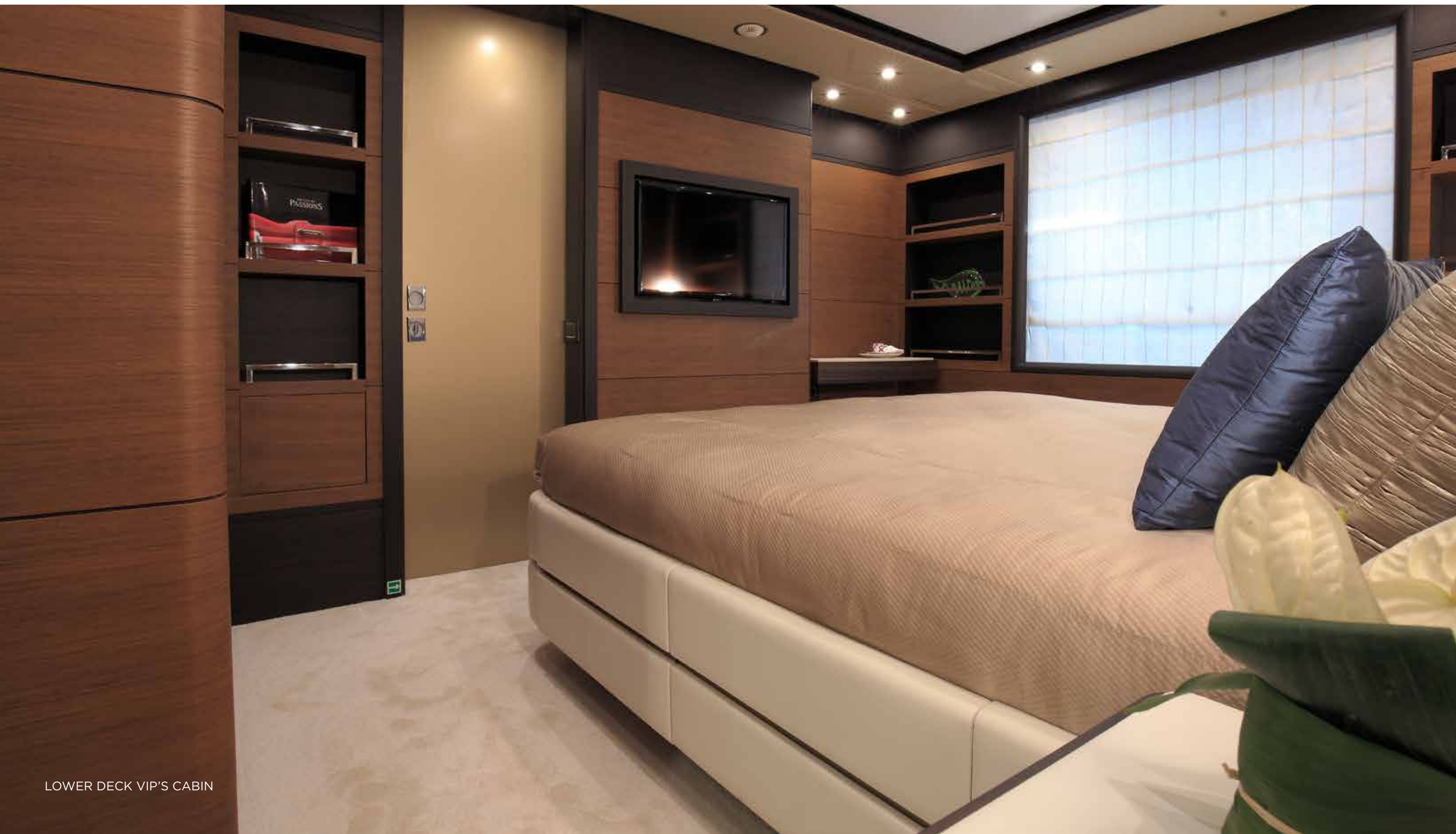












LOWER DECK VIP'S CABIN



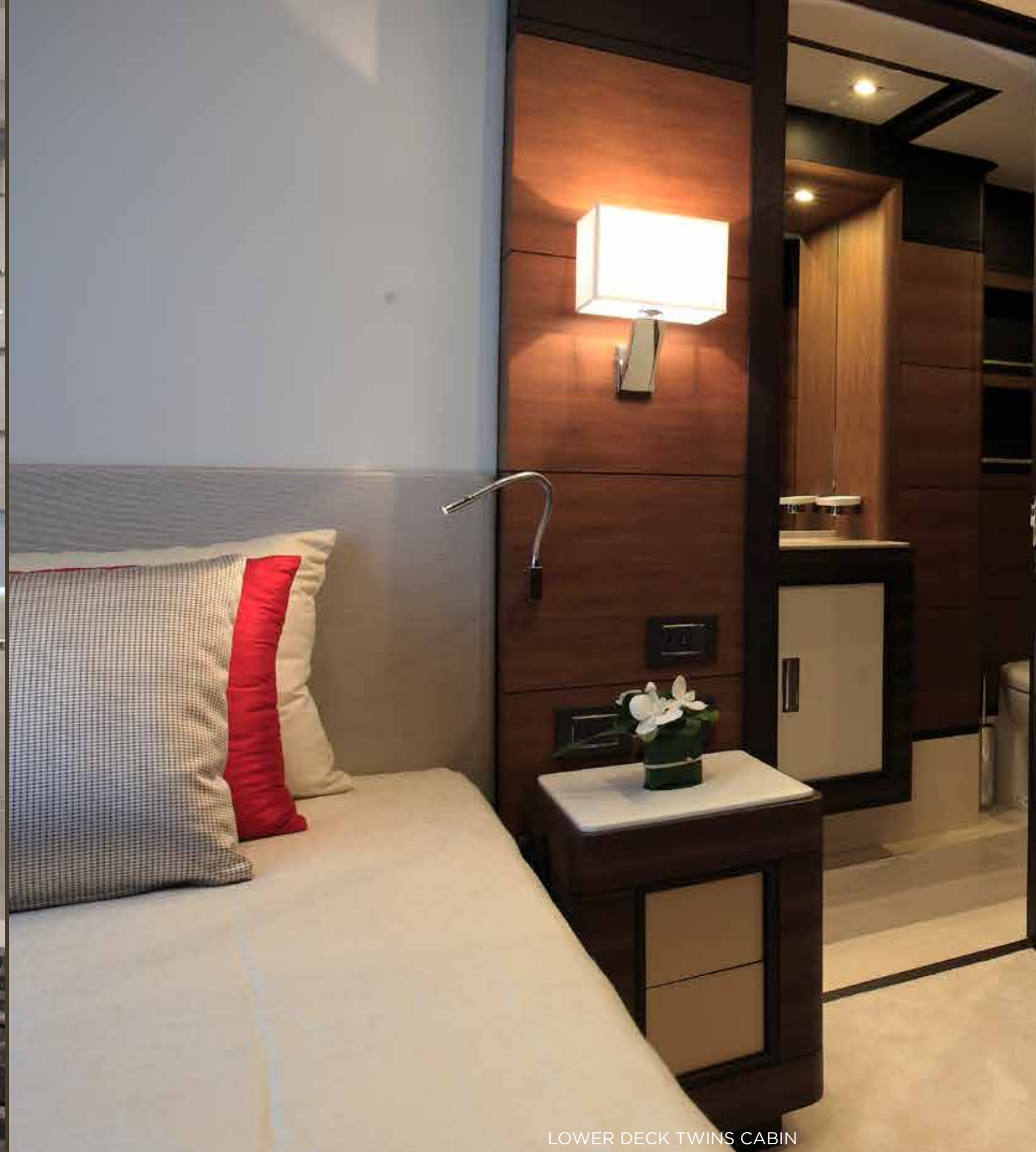
LOWER DECK VIP'S BATHROOM



LOWER DECK VIP'S CABIN



LOWER DECK VIP BATHROOM



LOWER DECK TWINS CABIN





MAIN DECK GALLEY



UPPER DECK WHEELHOUSE



UPPER DECK CAPTAIN'S CABIN



LOWER DECK CREW MESS

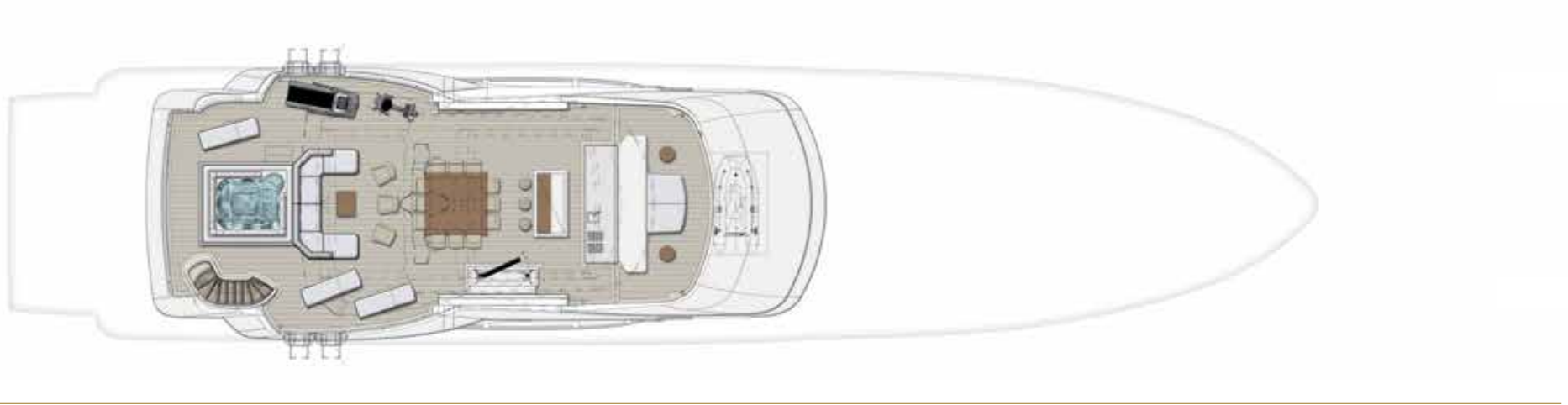
LOWER DECK ENGINE ROOM

LOWER DECK GARAGE



LADY M | BY004

GENERAL ARRANGEMENTS



SUN DECK



MAIN DECK



UPPER DECK



LOWER DECK

LADY M | BY004

TECHNICAL SPECIFICATION

Builder Azimut Benetti Spa, Benetti Shipyard
Via M. Coppino, 104 Viareggio (Lucca) – Italy Phone +39 05843821 – sales@benettiyachts.it – benettiyachts.it
Naval Architect Benetti
Exterior Designer Righini Design
Interior Designer for Owner and Guest spaces Zuretti Interior Designers
Interior Designer for Crew spaces Benetti

DIMENSIONS AND MAIN CHARACTERISTICS OF THE YACHT
Length overall 41.93 mt - 137' 7"
Length waterline 35.52 mt - 116' 6"
Beam overall 9.05 mt - 29' 8"
Draft at half load 2.08 mt - 6' 9"
Draft at full load 2.19 mt - 7' 2"
Light Ship Displacement 275.8 tons
Half Load Displacement 325.9 tons
Full Load Displacement 354.8 tons
Fuel tank capacity 63,750 l - 16841 US gals
Fresh water capacity 10,400 l - 2747 US gals
Sea water ballast capacity 4,108 l - 1085 US gals
Accommodation for Owner & Guests 12 persons in 5 cabins
Accommodation for Crew 9 persons in 5 cabins

PERFORMANCE AND MAIN MACHINERY
Main engines 2 x CAT C32 Acert 1081 kW @ 2300 rpm.
Gear box 2 x ZF3356
Generators 2 x KOHLER 125 EFOZD 125 kW, 400 V, 3 ph, 50 Hz
Propellers 2 x five fixed blades made in nickel-aluminium-bronze
Water maker 2 x 9000 lt/day IDROMAR MC9 (18000 lt/day total at 25°C sea water temperature)
Bow thruster NAIAD MARINE electric motor of 75 kW
Stabilisers NAIAD MARINE 525 non-retractable fins
Max speed at half load displacement 15.3 Knots
Cruising speed at 85% of maximum power at half load 14.1 Knots
Range at 11 Knots one generator working at 75% of maximum power 4.370 Nautical Miles

CLASSIFICATION AND CERTIFICATES
The Yacht including its machinery, equipment and systems will be in compliance with the following:
RINA rules for classification of pleasure yachts C•HULL • MACH
Convention on the International Regulations for Preventing Collusions at sea, 1972;
Flag Authority Requirements, additional to Class Notation and to the Specification, will be evaluated case by case and quoted accordingly if feasible;
The yacht has been built in accordance with LY2 Code for Large Yachts

HULL AND SUPERSTRUCTURE CONSTRUCTION
Hull and deck are entirely built in FRP (Fiberglass Reinforced Plastic) with combination of foam core sandwich and single skin fiberglass construction.

Superstructure is built in Fiberglass Reinforced Plastic with a cored sandwich structure.

The connection between the superstructure and the main deck will be obtained by means of stainless steel bolts and flanges and an adequate number of FRP layers according to the Classification Society requirements.

AIR CONDITIONING SYSTEM
The system is based on the following criteria:
Summer
Outside air 35 °C 95 F R.H. 90 %
Inside air 22 °C 72 F R.H. 55 %
Sea water temperature 32 °C 90 F

Winter
Outside air 0 °C 32 F R.H. 90%
Inside air 22 °C 72 F R.H. 50%

OUTFITTING GENERAL CHARACTERISTICS
Windlasses 2 x Electric windlasses Voltage is 400V AC, 3 phases and power 5,500 W.
Capstans Two electric foot operated capstans
Anchors 2 x SHHP (super high holding power)
Chains 2 x per requirements

Gangway Telescopic 3 stages, length 5m with a walking width of 520 mm
Transom door 1 x hydraulic door opening downwards
Tender and water toys storage
1 x 6,2 m x 2,61 x 1,13 tender,
2 x 3,07 m x 1,22 x 1,16 jet-ski

ELECTRICAL SYSTEM
The electrical equipment, wiring, fixtures, etc. and its installation shall be in accordance with the Classification Society rules.

The electrical system installed shall be to the requirements of the Classification Society and it will generally consist of a 400V AC / 3 phase / 50 Hz system, a 230V AC / 1 phase / 50 Hz system and a 24 VDC system.

NAVIGATION AND COMMUNICATION SYSTEM
Navigation and Communication System
Navigation lights N° 1 battery less emergency telephone system
SSB system
One radiotelephone SSB - 150 W with DSC MF will be provided.
One echosounder will be provided with dual frequency transducer (depth, log, water temp) with PC interface for chart plotter software.
One IMO approved Echosounder integrated in navigation system
One IMO approved Log integrated in navigation.system
One ceiling mounted magnetic compass will be provided.
One wind system with no moving parts and with GPS, air temperature and pressure sensors
One VHF class A. IMO approved with distress capabilities
One standard VHF will be provided.
N° 2 remote control unit for VHF (Crew Mess,Galley).
N° 4 handheld VHF for mooring operation will be supplied.
N°2 GMDSS VHF IMO approved
N°1 EPIRB
N°2 SART
N°1 BNWAS system
One IMO approved 12 kW X - band 4 ft antenna with ARPA and AIS interfaces
One radar interface will be provided.
One gyrocompass will be provided comprising of n° 1 analogic repeater.
N°1 digital repeater for steering room.
N°1 rudder angle indicator for steering room.
One meteo fax will be provided.
One autopilot will be provided comprising of n° 1 NFU tiller interface,
n° 1 rudder angle indicator, n° 1 feedback unit.
N° 1 take over system for n° 3 control stations will be provided.
N° 1 GSM interface will be provided to be connected to the VOIP system
N°1 UMTS system connected to Network system
N° 1 GPS systems will be provided. Included in integrated navigation system.
N°1 AIS system IMO approved
Telephone system integrated in B.E.S.T system.
One chart plotter system for charting will be provided.
One satellite communication system for voice and data FLEET BB250
N°1 INMARSAT SATCOM C system
N° 1 NAVTEX
A chromium plated pneumatic three tones horn.
N° 17 VOIP telephones connected to the B.E.S.T network will be provided.

ENTERTAINMENT SYSTEM
Crew Mess
n° 1 mini Hi Fi with DVD Player
n° 1 i Pod docking station
n° 2 speakers 6,5",
n° 1 TV LCD 32",
n° 1 IP telephone,
Internet connection,
n° 1 TVCC control monitor.
Sat TV decoder predisposition (Decoder is Owner's supply)
Beach area
n° 1 Marine CD Player/ FM Tuner
n° 2 marine speakers 8"
n° 1 IP telephone

WiFi network coverage
Twin Guest Cabins Items to be considered for two cabins.
n° 1 client BEST (Benetti's Exclusive Sea Technology)
with DVD player,
n° 1 sintoamplifier,
n° 2 speakers 6,5",
n° 1 APPLE TV,
n° 1 IP telephone
n° 1 Integrated wi-fi remote control Apple itouch
n° 1 iPod docking station,
n° 1 IP telephone,
Internet connection,
Sat TV decoder (Decoder is Owner's supply)
WiFi network coverage,
VIP Cabins Items to be considered for three cabins.
n° 1 client BEST with DVD player,
n° 1 sintoamplifier,
n° 2 speakers 6,5",
n° 1 TV LCD 32",
n° 1 APPLE TV,
n° 1 Integrated wi-fi remote control Apple itouch
n° 1 iPod docking station,
n° 1 IP telephone,
Internet connection,
Sat TV decoder (Decoder is Owner's supply)
WiFi network coverage,
Owner's Suite
n° 1 client BEST with DVD player,
n° 1 sintoamplifier,
n° 5 speakers 6,5",
n° 1 subwoofer,
n° 1 TV LCD 55",
n° 1 APPLE TV,
n° 1 Integrated wi-fi remote control, Apple iPad
n° 1 IP telephone,
Internet connections,
Sat TV decoder (Decoder is Owner's supply)
WiFi network coverage,
Domotic functions integrated on remote control.
Crew Cabins Items to be considered for four cabins.
n° 1 mini Hi Fi with CD Player
n° 2 speakers 5",
n° 1 IP telephone.
Owner's Suite
n° 1 client BEST with DVD player,
n° 1 sintoamplifier,
n° 5 speakers 6,5",
n° 1 subwoofer,
n° 1 TV LCD 55",
n° 1 APPLE TV,
n° 1 Integrated wi-fi remote control, Apple iPad
n° 1 IP telephone,
Internet connections,
Sat TV decoder (Decoder is Owner's supply)
WiFi network coverage,
Domotic functions integrated on remote control.
Owner's Study
n° 2 speakers 6,5",
n° 1 IP telephone,
Internet connection,,
Wi Fi network coverage
Galley
n° 1 mini Hi Fi with CD Player
n° 4 speakers 6,5",
n° 1 IP telephone,
Internet connection,
n° 1 panel for crew calls.
Main Saloon
n° 1 client BEST with DVD player,
n° 1 sintoamplifier,
n° 5 speakers 6,5",
n° 1 subwoofer,
n° 1 TV LCD 55",
n° 1 APPLE TV,
n° 1 Integrated wi-fi remote control, Apple iPad
n° 1 IP telephone,
Internet connections,
Sat TV decoder (Decoder is Owner's supply)
n° 1 iPad docking station,
WiFi network coverage,
Domotic functions integrated on remote control.
Main saloon bar
n° 2 speakers 6,5" with separate volume control,
Wi Fi network coverage
External Main Deck
n° 4 marine speakers 8" with separate volume control

Wheelhouse
n° 1 mini Hi Fi with CD Player
n° 2 speakers 6,5",
n° 1 IP telephone,
Internet connection.
Captain's Cabin
n° 1 mini Hi Fi with DVD Player
n° 1 iPod docking station,
n° 2 speakers 6,5",
n° 1 TV LCD 32",
n° 1 IP telephone,
Internet connection,
Sat TV decoder (Decoder is Owner's supply)
WiFi network coverage
Sky Lounge
n° 1 client BEST (Benetti's Exclusive Sea Technology)
with DVD player,
n° 1 sintoamplifier,
n° 5 speakers 6,5",
n° 1 subwoofer,
n° 1 TV LCD 75",
n° 1 APPLE TV,
n° 1 Integrated wi-fi remote control Apple iPad
n° 1 IP telephone,
Internet connections,
Sat TV decoder (Decoder is Owner's supply)
WiFi network coverage,
Domotic functions integrated on remote control.
Upper Deck Dining
n° 2 speakers 6,5" with separate volume control,
Wi Fi network coverage
External Upper Deck Aft
n° 4 marine speakers 8" with separate volume control
External Upper Deck Fwd
n° 2 marine speakers 8"
Sun Deck
n° 1 client BEST with DVD player,
n° 1 sintoamplifier,
n° 8 speakers 8",
n° 1 TV LCD 55 WP",
n° 1 APPLE TV,
n° 1 Integrated wi-fi remote control Apple iTouch
n° 1 iPod docking station,
Internet connection,
Sat TV decoder Decoder is Owner's supply)
WiFi network coverage,
Domotic functions integrated on remote control.

TECHNICAL SPACE
Server Rack
n° 1 switch managed 24 ports full gigabits,
n° 2 switch managed 48 ports full gigabits,
n° 1 outdoor AP Wi Fi AWK-1100,
n° 1 KVM controller (keyboard, mouse, lcd),
n° 1 AVoD storage system 6 Tbytes raw RAID System
+ Avod + OAM + YAS server,
n° 1 LAN server + firewall +data router,
n° 1 VOIP gateway,
n° 1 VOIP server,
n° 1 UPS rack mount,
n° 1 rack for devices housing,
n° 1 CCTV server
TV SAT A/V Distribution Rack
n° 1 antenna + controller,
n° 1 UPS 700 VA,
n° 1 magic switch multiport
Distributed Equipment
n° 9 access points for WiFi.

DOMESTIC APPLIANCES
Main Deck, Galley and Pantry
n° 1 cooking top 90 cm,
n° 1 grill top,
n° 1 exhaust hood,
n° 1 oven 90 cm,

n° 1 oven 60 cm,
n° 1 microwave,
n° 1 dishwasher,
n° 1 garbage macerator for the sink,
n° 1 freezer,
n° 1 fridge,
n° 1 trash compactor,
n° 1 wine cellar undertop type,
n° 1 fridge drawer,
n° 1 coffee system
Crew mess
n° 1 microwave,
n° 1 dishwasher 45 cm,
n° 1 fridge/freezer,
n° 1 cooking top 60 cm,
n° 1 exhaust hood,
Main saloon bar
n° 1 ice maker,
n° 1 frigobar
Owner's study
n° 1 frigobar
Guest's lobby
n° 1 frigobar
Sky lounge bar/pantry
n° 1 ice maker,
n° 1 frigobar,
n° 1 microwave,
n° 1 dishwasher
Sun deck area
n° 2 barbecue,
n° 1 ice maker,
n° 1 frigobar
Laundry
n° 2 washers,
n° 2 dryers
Beach area
n° 1 ice maker
n° 1 frigobar

INTERIORS
In general materials and equipment will be purchased according to the properly style and the Benetti Excellence Range. For selections by the Owner of the Interior Designer different or in addition to what specified or not named in the Benetti Excellence Range, recommended Retail Prices will be compared with the total allowances.

Walls
Veneered wood in cherry, oak, ash, mahogany, Tanganyika walnut or equivalent, or upholstered panels

Floor
Carpet in guest & crew areas
Galley in rubber / vinyl

Bathroom floors
All guest bathrooms marble / crew rubber tiles

Ceiling
Lacquered wood or fabric upholstered panels

Door
Lacquered wood, mirrored or upholstered

Sanitary ware and taps
Ideal Standard, Grohe or equivalent

Loose furniture
According the General Arrangement drawing

This information is provided in good faith but without liability for error, omission or misrepresentation and it is subject to confirmation at the time of ordering and formal contract. This information is copyright of Azimut-Benetti Spa and no unauthorised use, duplication or distribution is permitted. The Builder reserves the right to substitute the manufacturer or supplier of any item of equipment due to product changes, improvements, availability of supply, changes in regulations, technology, know-how, etc provided that any substituted equipment shall be of equivalent or superior quality to that shown in this Specification.

HISTORY

BENETTI IS ONE OF THE OLDEST BUILDERS OF LUXURY MOTOR YACHTS IN THE WORLD. ESTABLISHED BY LORENZO BENETTI IN 1873, THE COMPANY BEGAN LIFE BUILDING WOODEN BOATS USED FOR LOCAL AND INTERNATIONAL TRADE. AFTER THE DEATH OF LORENZO, HIS TWO SONS GINO AND EMILIO TOOK OVER THE MANAGEMENT OF THE SHIPYARD. THEY CHANGED ITS NAME TO FRATELLI BENETTI AND QUICKLY BUILT UP A REPUTATION THAT EXTENDED BEYOND THE MEDITERRANEAN.

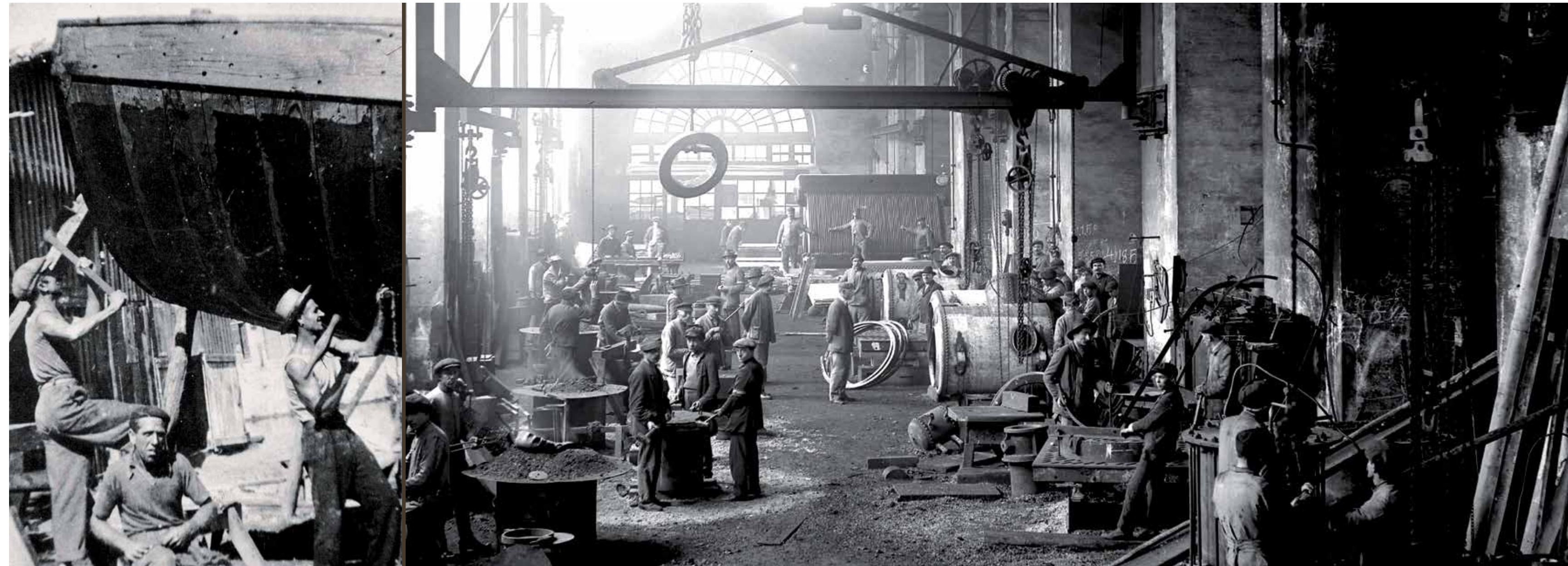
AFTER THE SECOND WORLD WAR, WITH THE DISAPPEARANCE OF COMMERCIAL SAILING VESSELS BUILT FROM WOOD, BENETTI CHANGED DIRECTION AND BEGAN PRODUCING PLEASURE CRAFT MADE FROM STEEL. THEN IN THE EARLY 1960S THE SHIPYARD PRODUCED ITS FIRST LUXURY MEGA YACHTS. SINCE 1980 THE FLEET HAS INCLUDED BIG MOTOR YACHTS IN THE 30 TO 60 METER RANGE AND BEYOND, NOT LEAST THE FAMOUS 86-METER 'NABILA'.

IN 1985 THE SHIPYARD WAS ACQUIRED BY THE CELEBRATED TURIN-BASED BOAT BUILDER AZIMUT SPA, WHICH BROUGHT IN NEW MANAGEMENT AND TRANSFORMED BENETTI INTO THE MODERN, TECHNOLOGICALLY ADVANCED REALITY WE KNOW TODAY: A FORWARD-LOOKING AND INNOVATIVE SHIPYARD, BUT ALSO ONE THAT PROUDLY RETAINS ITS TRADITIONAL VALUES OF EXPERIENCE, SKILL AND A PASSION FOR FINE CRAFTSMANSHIP.

AZIMUT BENETTI GROUP IS WHOLLY PRIVATELY OWNED, AS IT HAS BEEN FROM THE OUTSET.

THE GROUP'S FINANCIAL SOLIDITY AND INDEPENDENCE, BUILT OVER MORE THAN 40 YEARS IN BUSINESS, ARE KEY FACTORS IN ESTABLISHING CLOSE RELATIONSHIPS OF TRUST WITH CLIENTS.

TODAY AZIMUT BENETTI GROUP PROVIDES GUARANTEES OF STRENGTH AND STABILITY, BOTH PARTICULARLY IMPORTANT FACTORS FOR MEGA YACHT CLIENTS INVOLVED IN LONG TERM CONSTRUCTION PROJECTS.



SHIPYARDS

VIAREGGIO

BENETTI HAS HAD ITS HEADQUARTERS IN VIAREGGIO, IN VIA COPPINO, SINCE 1873. THE TWO PRODUCTION FACILITIES HERE, DARSENA LUCCA AND DARSENA ITALIA, ARE EQUIPPED TODAY WITH THE LATEST TECHNOLOGY FOR BUILDING CLASS RANGE YACHTS FROM 93 UP TO 145 FOOT. DARSENA ITALIA CAN PRODUCE FOUR 35-70 METER YACHTS CONCURRENTLY AND CAN ALSO BOAST A DRY DOCK AND A HELIPAD. DARSENA LUCCA CAN BUILD THREE YACHTS AT THE SAME TIME UP TO 42 METERS IN LENGTH. A THIRD, MORE RECENT, FACILITY INCREASES PRODUCTION CAPACITY BY SIX MORE YACHTS.

LIVORNO

PURCHASED IN 2004, THE LIVORNO SHIPYARD COVERS A SURFACE AREA OF ABOUT 200,000 SQM. INHERITED FROM THE ILLUSTRIOUS CANTIERE ORLANDO, IT HAS BEEN CONVERTED BY BENETTI INTO A MODERN PRODUCTION FACILITY WHERE 12 CUSTOM STEEL AND ALUMINIUM MEGA YACHTS CAN BE BUILT AT THE SAME TIME. THE LIVORNO SHIPYARD ALSO OFFERS SUPER-YACHT REPAIR SERVICES, WITH A PRIVATE DOCK WHERE BOATS UP TO 80 METERS IN LENGTH CAN MOOR. AS THE MEDITERRANEAN'S LARGEST AND MOST UP-TO-DATE REFIT CENTRE, IT IS SET TO PLAY A KEY ROLE IN PLEASURE CRAFT DEVELOPMENT IN ITALY AND EUROPE AS A WHOLE.

FANO

THE FANO SHIPYARD JOINED AZIMUT BENETTI GROUP IN JULY 2002 FOLLOWING THE MERGER WITH CANTIERI MOSCHINI, OF WHICH IT HAD BEEN THE MAJORITY SHAREHOLDER SINCE 1998. THE SITE IN ITALY'S LE MARCHE REGION IS TODAY REGARDED AS AN INTERNATIONAL CENTRE OF EXCELLENCE IN THE MOULDING AND LAMINATION OF YACHTS BUILT FROM COMPOSITE MATERIALS. THE 34,000 SQM PRODUCTION FACILITY, OF WHICH 12,000 SQM UNDER COVER, EMPLOYS A HIGHLY QUALIFIED WORKFORCE OF SPECIALISTS.





VIAREGGIO

Italy

Via Michele Coppino, 104
55049 - Viareggio (Lucca)

P: +39 0584 3821
F: +39 0584 39623
info@benettiyachts.it

LIVORNO

Italy

Via Edda Fagni, 1
57100 - Livorno

P: +39 0586 415600
F: +39 0586 834053
info@benettiyachts.it

FT LAUDERDALE

USA

Benetti Americas
1535 SE 17th Street - Suite B 101
Ft Lauderdale, FL 33316, USA

P: +1 (954) 687 9436
info@benettiamericas.com

DUBAI

UAE

Jumeirah Business Center 2
JLT, Dubai

M: +971 5555 24 852
F: +971 4 439 0185
nabil.eljammal@benettiyachts.it

HONG KONG

Asia

Benetti Asia Ltd
14/F China Underwrite's Centre,
88 Gloucester Road,
Wan Chai - Hong Kong

M: +852 51900112
F: +852 3973 8500
natalie.ye@benettihk.com

THIS BROCHURE SHALL NOT CONSTITUTE IN ANY CIRCUMSTANCE WHATSOEVER ANY OFFER BY THE SHIPYARD TO ANY PERSON OR BE INCORPORATED INTO ANY CONTRACT. ANY AND ALL INFORMATION CONTAINED IN THIS BROCHURE, INCLUDING WITHOUT LIMITATION ALL TECHNICAL DATA, PERFORMANCE, ILLUSTRATIONS AND DRAWINGS, ARE JUST A ROUGH GUIDE AND THEY ARE NOT CONTRACTUAL AND REFER TO STANDARD MODELS OF MOTOR YACHTS BUILT BY THE SHIPYARD AND HAVE BEEN UPDATED BY THE SHIPYARDS AS OF THE DATE OF ISSUE OF THE BROCHURE. THEREFORE THE ONLY INDICATIONS BINDING ON THE SELLER ARE CONTAINED SOLELY IN THE SALE AGREEMENT AND IN THE RELEVANT SPECIFIC MANUAL. THIS BROCHURE IS BASED ON INFORMATION AVAILABLE AT THE DATE OF ISSUE. NOTWITHSTANDING ALL EFFORTS TO ENSURE ACCURACY, THE INFORMATION CONTAINED IN THE BROCHURE MAY NOT COVER ALL DETAILS, TECHNICAL-COMMERCIAL CHANGES SUBSEQUENT TO THE DATE OF ISSUE, NOR ACCURATELY FORESEE OR REPORT ALL POSSIBLE SCENARIOS. DISPLAYS, PHOTOS, SCHEMES, DESIGNS OR EXAMPLES CONTAINED IN THIS BROCHURE ARE SOLELY AND EXCLUSIVELY REPRODUCED TO HIGHLIGHT THE INFORMATION CONTAINED. DUE TO THE DIFFERENT CHARACTERISTICS OF EACH YACHT, THE SHIPYARD DECLINES ANY AND ALL LIABILITY FOR ANY USE THEREOF ON THE BASIS OF THE INFORMATION CONTAINED IN THIS BROCHURE.

CREDITS | PHOTOGRAPHY: BENETTI SHIPYARD ARCHIVE AND PHOTOGRAPHER GIULIANO SARGENTINI
CONCEPT & DESIGN: DOLCI ADVERTISING

AZIMUT-BENETTI SPA VIA M. COPPINO, 104 - VIAREGGIO (LUCCA) ITALY - PHONE +39 05843821 SALES@BENETTIYACHTS.IT BENETTIYACHTS.IT

BENETTIYACHTS.IT

a brand of
AZIMUT | BENETTI
GROUP